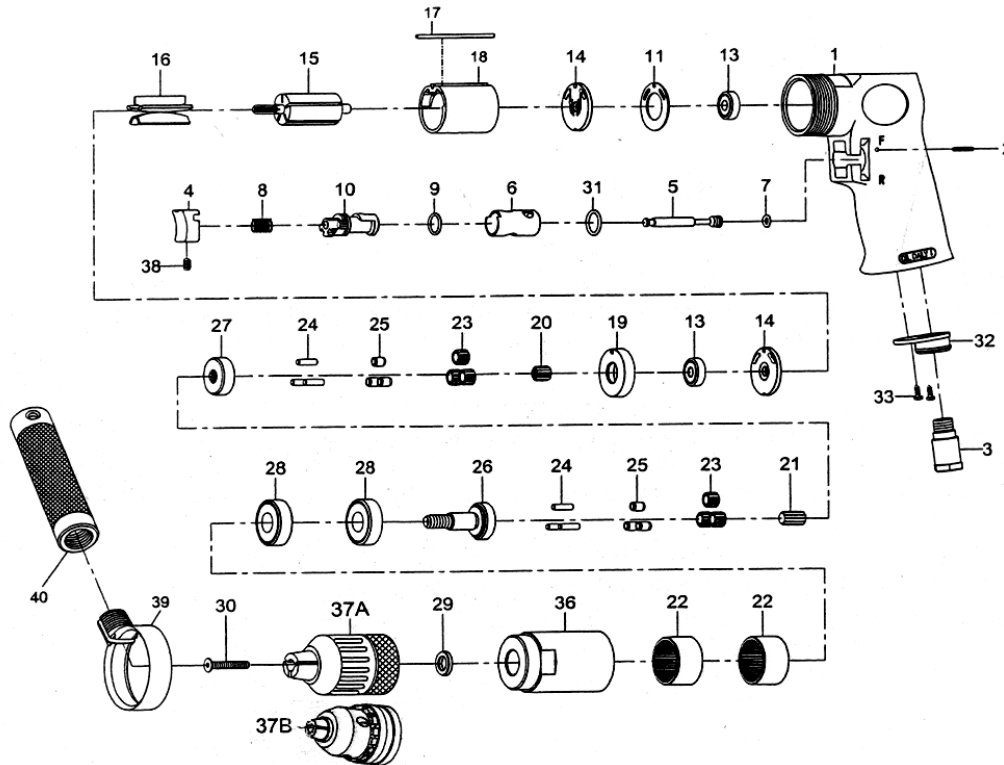


GP-0657

www.air-allied.com.au

1/2" REVERSIBLE DRILL



PARTS DESCRIPTION

NO.

01.	MOTOR HOUSING
02.	SPRING PIN (2.5x24L)
03.	AIR INLET
04.	TRIGGER
05.	VALVE STEM
06.	REVERSE BUSHING
07.	O-RING (4.8X1.9)
08.	VALVE SPRING
09.	O-RING (12x1.6)
10.	REVERSE LEVER
11.	MOTOR GASKET
13.	BALL BEARING (2) (626ZZ)
14.	END PLATE (2)
15.	ROTOR
16.	ROTOR BLADE (5)
17.	SPRING PIN (2.5x55L)
18.	CYLINDER
19.	SPACER
20.	PINION GEAR
21.	CENTER GEAR
22.	INTERNAL GEAR (2)
23.	PLANET GEAR (6)

PARTS DESCRIPTION

NO.

24.	PIN (6) (4x13.8L)
25A.	BUSHING (6)
25B.	NEEDLE BEARING (6)
26.	WORK SPINDLE
27.	REDUCTION SPINDLE
28.	BALL BEARING (2) (6201Z)
29.	CHUCK SPACER
30.	CHUCK SCREW (M5x30L)
31.	O-RING (13.8x2)
32.	EXHAUST DIFFUSER
33.	SCREW (2) (TS2.9)
36.	CLAMP NUT
37A.	1/2" KEYLESS CHUCK
37B.	1/2" KEY CHUCK
38.	SET SCREW (M4x8L)
39.	RETAINER
40.	HANDLE
K1.	#24(3)+#26
K2.	#24(3)+#27
K3A.	#23+#25A EACH 1 PC
K3B.	#23+#25B EACH 1 PC